

LAND OF

ARCHERY

PRE-GAMES TRAINING CAMPS

2024

The **Archerie** venue



THE AREA OF COMPIÈGNE

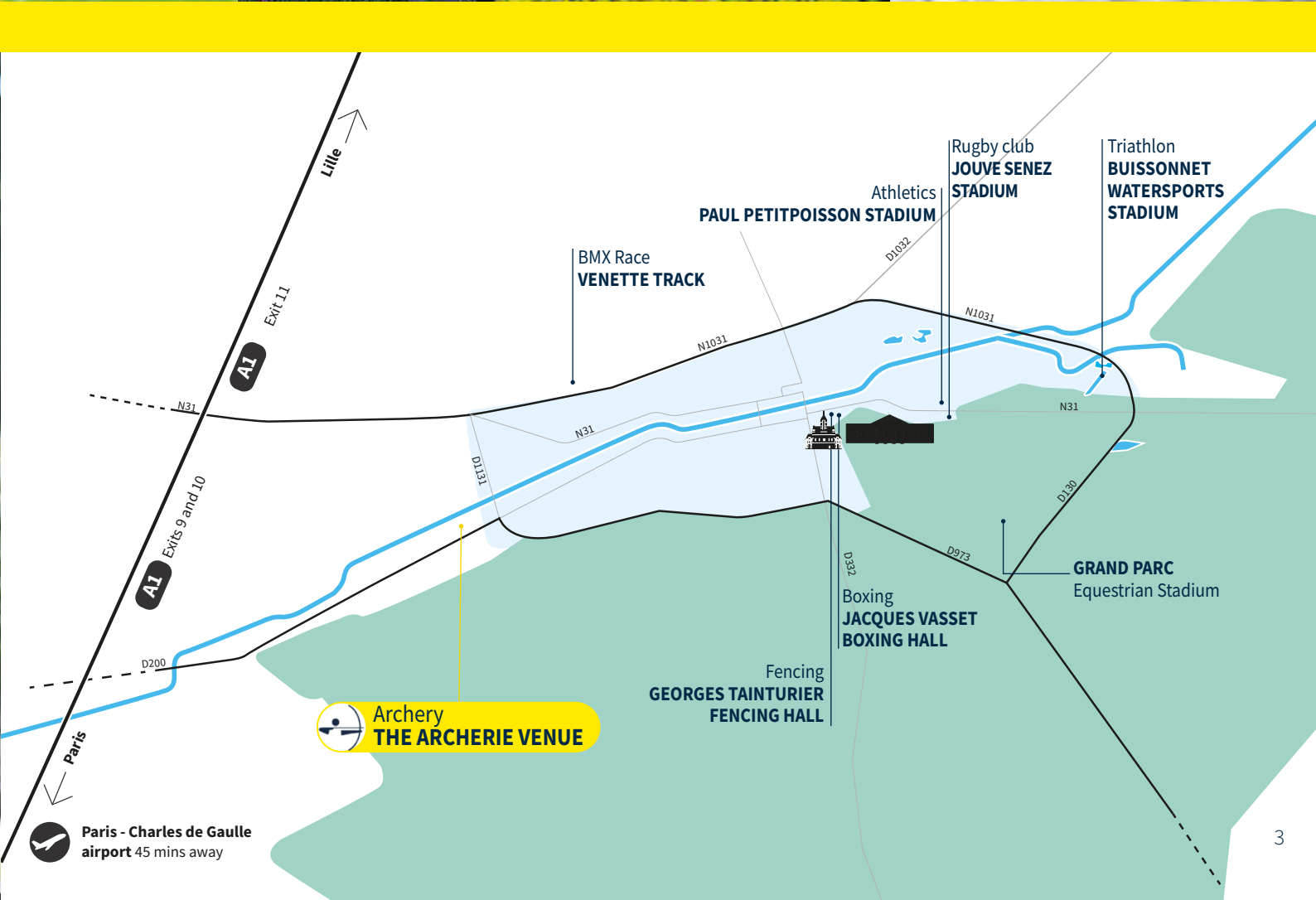
CITY OF SPORT, HOMELAND OF CHAMPIONS!

From the emperor Charles the Bald to the Armistices, Kings of France and emperors and historical figures (Joan of Arc, Georges Guynemer, Coco Chanel...), the imperial city is filled with the traces of a glorious past.

80 km north of Paris and 45 minutes from Roissy Charles de Gaulle airport, Compiègne is a choice residence for all athletes and their teams. The immediate proximity of the Compiègne forest (15,000 ha), the 3rd largest forest in France, provides athletes with a beneficial and rejuvenating environment for their physical and mental preparation, with 620 miles of trails and over 90 miles of cycle paths.

These exceptional training grounds are within a stone's throw from the heart of the city, near neighbourhoods and homes in the typical architecture lined with centuries-old trees. A natural extension of the castle park, which brings sightseers to picturesque villages while giving access to a rich flora and fauna of several thousand species.

All sports facilities are located near the Compiègne town centre, with its shops and services, hotels, and many restaurants.



LAND OF ARCHERY

THE ARCHERIE VENUE



THE LARGEST ARCHERY CENTER IN FRANCE

The Compiègne archery centre is fully dedicated to the practice of archery for able-bodied and disabled athletes. It now covers an area of **2,000 square metres**.

The Compiègne site is the centre that integrates the most promising archers within the French division.

Several world medals, and an Olympic medal, were won by athletes who have trained in this centre.

Its current president, Philippe Bouclet, was the president of the French Archery Federation for 16 years, a member of the Council of World Archery Europe and vice-president of World Archery from 2008 to 2019.

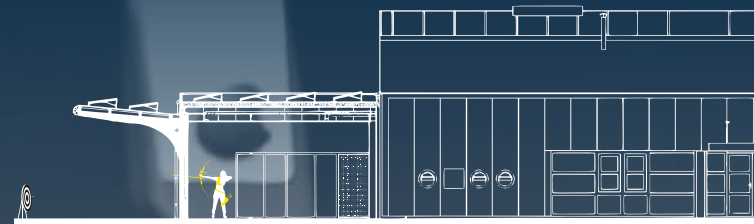
REGULATION-COMPLIANT EQUIPMENT

This archery sports centre has **indoors and outdoors shooting ranges**:

- > Outdoors shooting range of **36 targets** consisting of a shooting range, closed canopy, with awning, allowing shooting at **24 targets at Olympic distances** in all weathers and in perfect safety, and **12 removable targets** for all distance shooting (from 5 to 70 metres).
- > Indoors shooting, distance **up to 30 metres**, with 14 targets.
- > Indoors shooting, distance **up to 20 metres**, 8 targets.

Accessories:

- > A display panel, a sound system, WIFI, LED lighting system, moving targets, wind flags, programmable digital windsocks and time indicator.



COMPIÈGNE HERO

For many years, Compiègne and its area have seen a lot of archers go by, some of whom have achieved a sports career high level.

The sports director of the centre, Olivier Tavernier, won several medals in European and Global leagues.



STRONG POINTS



- **Our centre has been selected in sports excellence courses of the French Federation of Archery** for indoors and outdoors practice, meeting international and Olympic standards.
- **Additional equipment on site:** a fully equipped weight room with cardio-training, weight benches, squat cages and pulley work. Mezzanine offices with a view over the equipment, changing rooms. Night training is possible with LED target lighting.
- **Immediate proximity** to the network of cycling paths and the Mercières sports plain, including a swimming pool and an ice rink.
- **Sports facilities are open 24/7.**

THE AERA OF COMPIÈGNE

SERVICES AND STRONG POINTS TO MAKE A DIFFERENCE



A LARGE PANEL OF POTENTIAL ACCOMMODATION

Compiègne offers a wide range of accommodation, with 4-star hotels and guest rooms, Bed&Breakfast rooms and other atypical accommodation. It can therefore accommodate more than 3,000 people.

STAR-STUDED BISTROT-STYLED GASTRONOMY

Whether they are sportsmen or tourists, our visitors can experience a multitude of catering establishments of all kinds: gourmet cuisine, organic tables, themed or traditional restaurants, with many breweries, but also a wide choice of caterers to tailor to your specific meal plan.

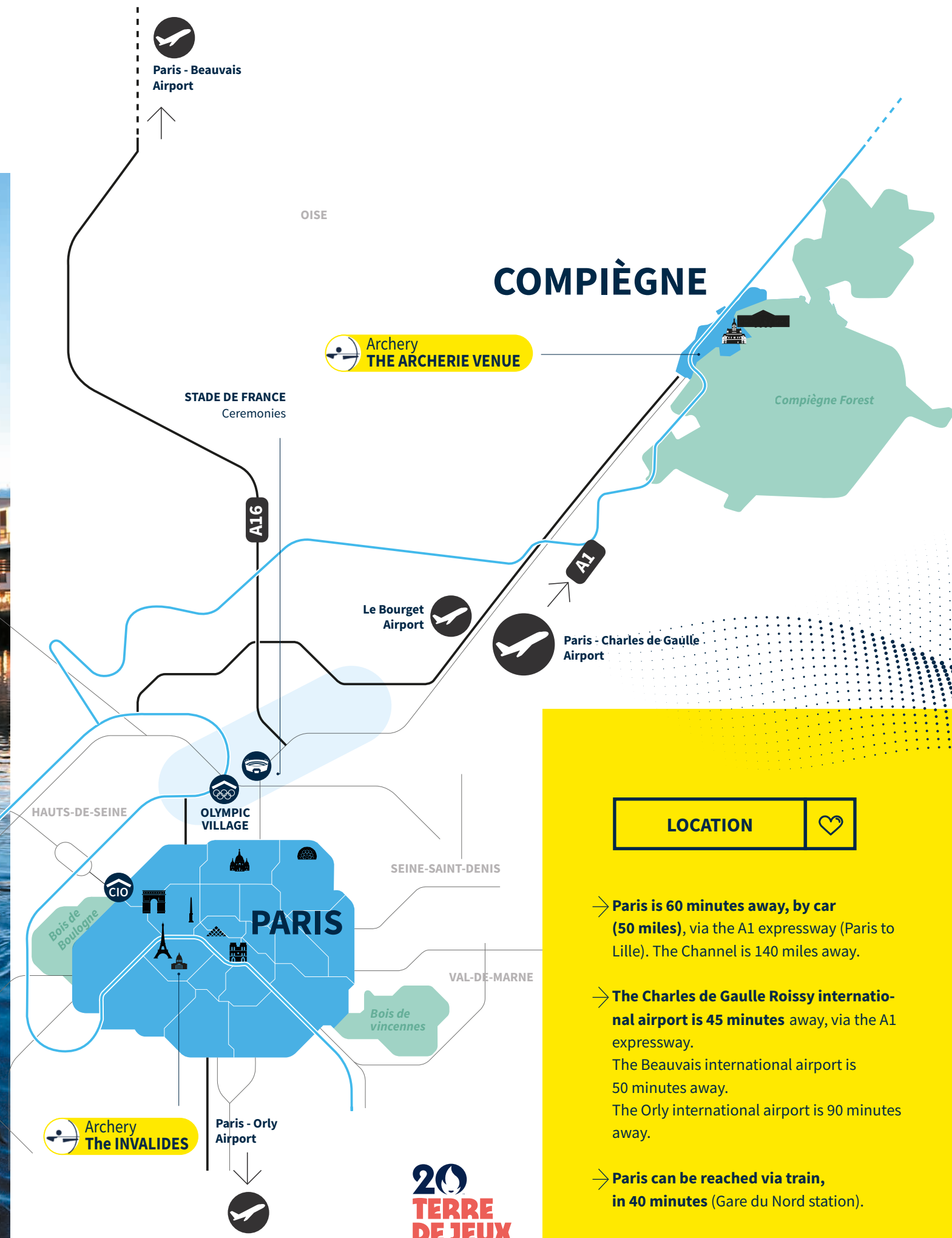
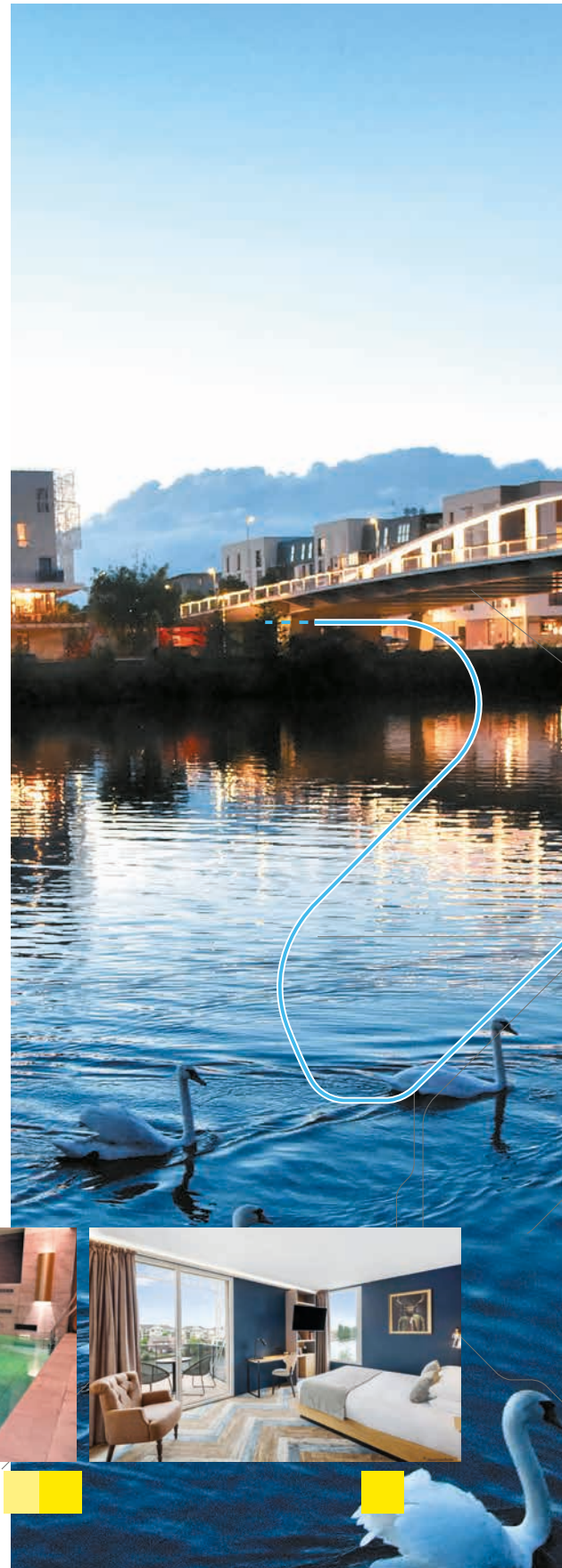
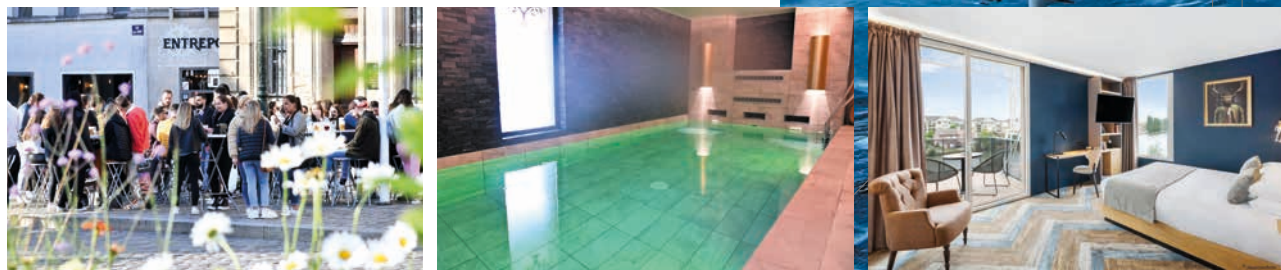
A PERSONALIZED OFFER

Your one sole contact within the Agglomeration of the Region of Compiègne: Antoine Martiak.

In accordance to your needs, a series of services available nearby will be at your disposal:

- balneotherapy, spa, or cryotherapy centres,
- privatisation of one of the swimming pools for the athletes,
- transport service on demand,
- Compiègne forest guide,
- organisation of relaxing tourist circuits and cultural visits.

Antoine Martiak is available for any further information.



LOCATION

- Paris is 60 minutes away, by car (50 miles), via the A1 expressway (Paris to Lille). The Channel is 140 miles away.
- The Charles de Gaulle Roissy international airport is 45 minutes away, via the A1 expressway. The Beauvais international airport is 50 minutes away. The Orly international airport is 90 minutes away.
- Paris can be reached via train, in 40 minutes (Gare du Nord station).



Sports Department 2024

Your contact :

Antoine MARTIAK

Project manager for

« Land of Olympic Games 2024 »

+33 (0)3 44 85 54 18 - +33 (0)6 08 93 12 22

terredejeux@agglo-compiegne.fr



www.agglo-compiegne.fr

ARC - Place de l'Hôtel de ville - CS 10007 - 60321 Compiègne Cédex - France